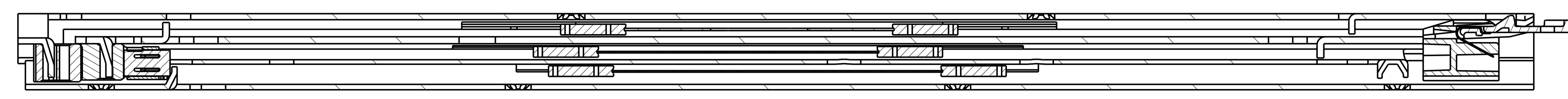


1 2 3 4 5 6 7 8 9 10 11 12 13 14 15 16 17 18 19 20

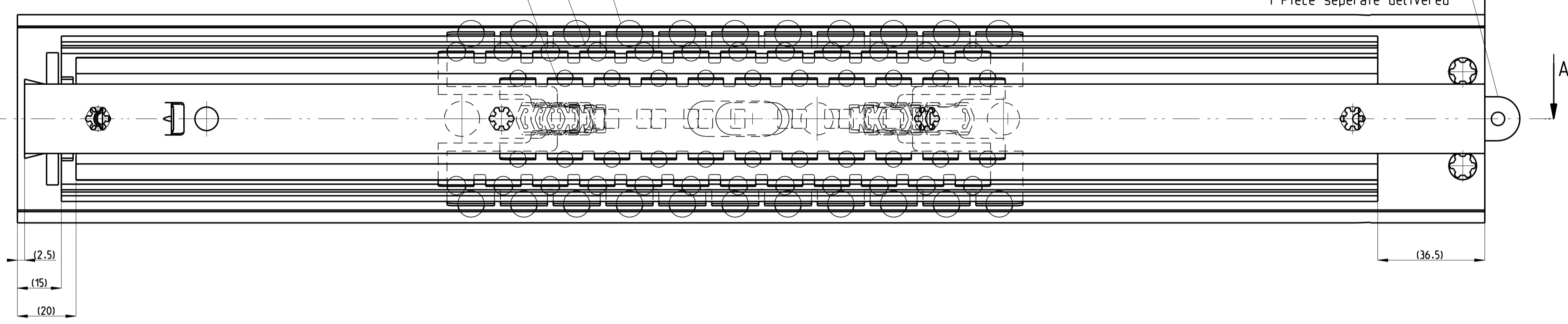
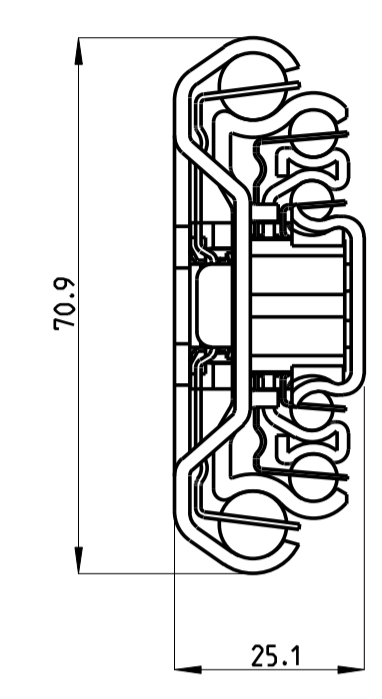
T 1-2 = 258.0  
 T 2-3 = 247.0  
 T 3-4 = 245.0



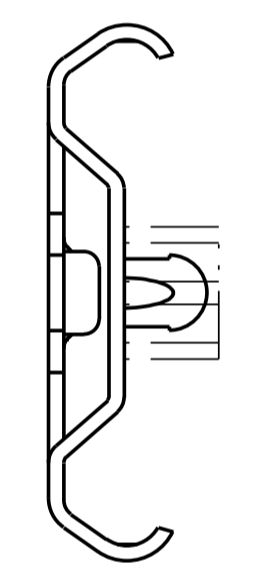
SECTION A-A

EXTENSION 750 ±6 mm

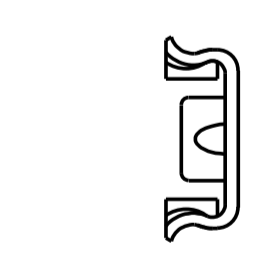
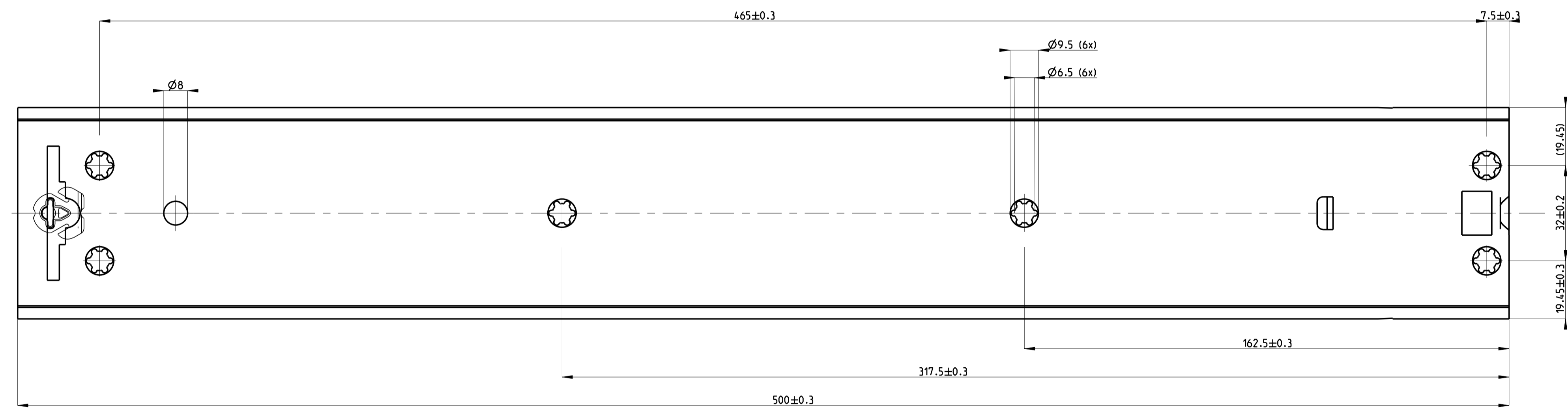
Lock-in latch not assembled.  
 1 Piece separate delivered



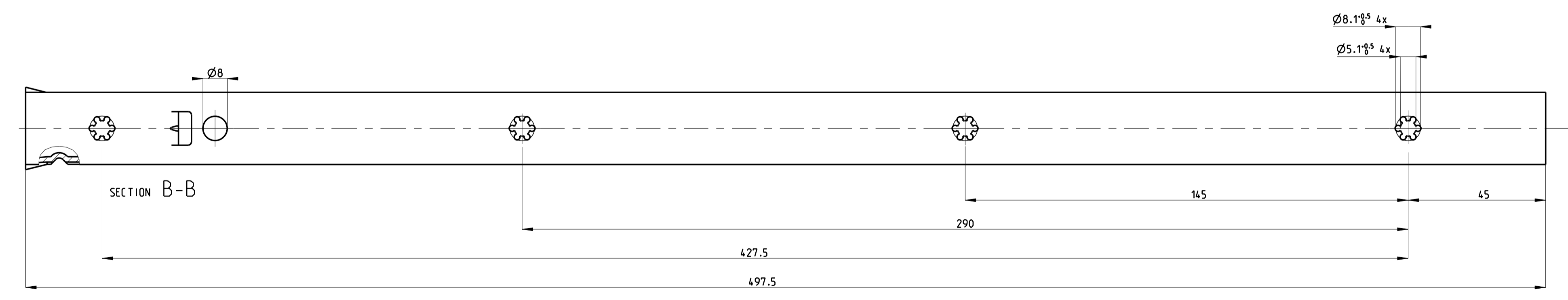
Front



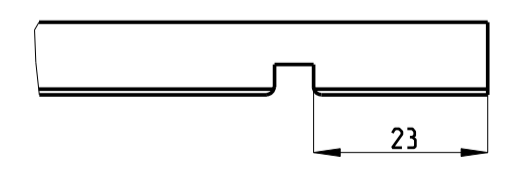
511-11-M34-TA1



514-11-M34-UB3



SECTION B-B



PRO/ENGINEER Drawing	Dimensions between marks are guide dimensions. Tolerances unless otherwise stated ±0.5mm.	Thomas Regout Int. B.V. reserves the right to alter non-customer specific specifications without notice.	
Was: - -			
American projection	DIMENSION	mm	MAT.: -
	SCALE	1:1	REM.: Rechter uitvoering = linker uitvoering.
	DATE	08-03-2007	-
	DESIGNER	M. Bulle	-
CHECKED	-	-	-
CONDOR 500,0 / 750,0 (25,1mm)			
<b>THOMAS REGOUT INTERNATIONAL BV</b>		Drw. Nr.	Format.
© Thomas Regout International BV All rights are reserved.		111-M34 _ 00	A1
		Production	

04	-	-	05	-	-	-	06	-	-	-	-
01	-	-	02	-	-	-	03	-	-	-	-